

**It takes a
special type**
*to save
a life*

**Learn how to maximize
your blood donation.**



**South Texas
Blood & Tissue Center**

It takes a special type *to save a life*

**Your donation is
valuable –
We want to make
the most of it!**



It takes a special type *to save a life*

To do this, we need to collect:

- **The right amount of blood**
- **The right type of blood**
- **The right component**
- **At the right time**

This helps us best meet patient needs.

It takes a special type *to save a life*

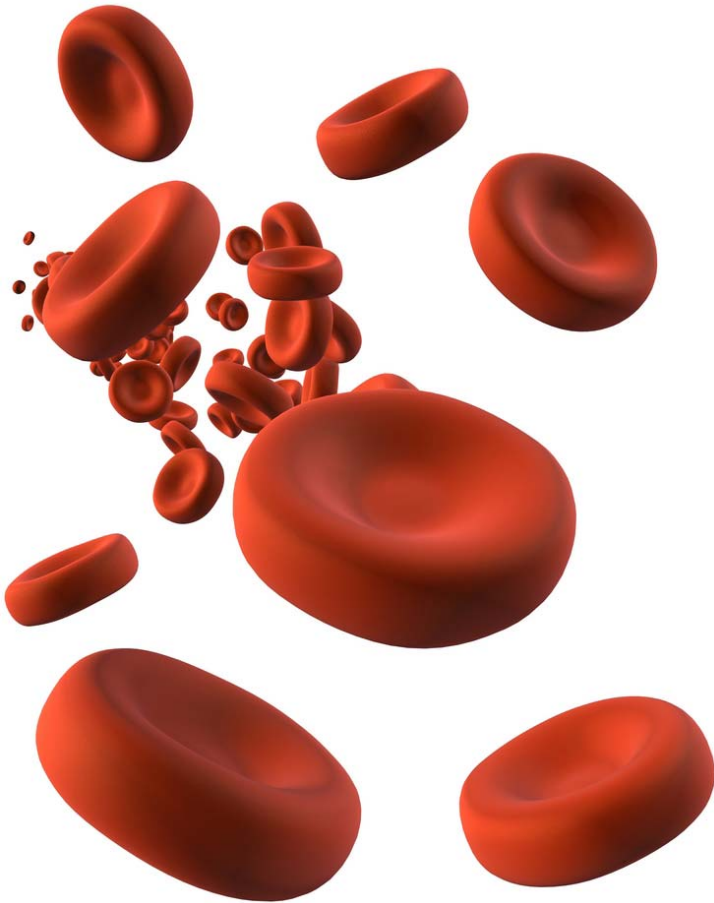
**You can save lives in
a way that's special
for you and has the
greatest possible
impact.**

**First, some basic
information...**



It takes a special type *to save a life*

Blood Components



Red blood cells carry oxygen to the body's organs and tissue. Donated red blood cells must be used within 42 days.

It takes a special type *to save a life*

Blood Components

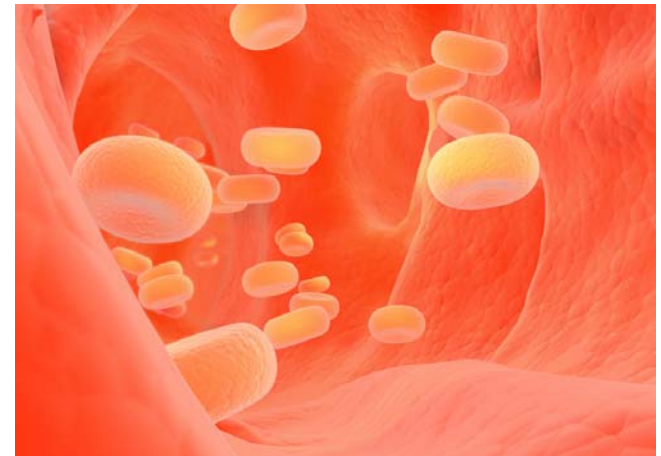
Platelets are small blood cells that help control bleeding. Donated platelets must be used within 5 days.



It takes a special type *to save a life*

Blood Components

Plasma helps maintain blood pressure and supplies critical proteins for blood clotting and immunity. Plasma can be stored for one year.



It takes a special type *to save a life*



Blood Components

**A liver transplant patient may use:
40 pints of red blood cells,
30 pints of platelets and
25 pints of plasma.**

It takes a special type *to save a life*

Blood Components

People who have suffered massive blood loss may require 50 pints of red blood cells.



It takes a special type *to save a life*

Blood Types

**You have one of these
basic blood types:**

•O •A •B •AB

**Positive or
Negative**



It takes a special type *to save a life*

Blood Types

**Most common is O Positive with
39% of the population.**

**Least common is AB Negative
with 1% of the population.**

It takes a special type *to save a life*



**Now that we know
something about
blood components
and blood types,
how do you save
lives in a way that's
special for you?**

It takes a special type *to save a life*

**When you donate,
give the blood
component most
needed by patients
in your blood type.**



It takes a special type *to save a life*



For example:
If you're O Negative,
you may be asked
to donate red
blood cells.

If you're B Positive,
you may be asked to
donate platelets.

It takes a special type *to save a life*

We must give hospitals exactly what they need when they need it. Hospitals may ask for “20 units of AB+ plasma,” or “40 units of O+ red blood cells.”

Blood needs change daily!

It takes a special type *to save a life*



**Blood is perishable
and the supply must
constantly be refilled
with the right component
at the right time.**

**(But don't worry.
We keep track of that.)**

It takes a special type *to save a life*

By making an appointment to donate you help us collect:

- **The right amount**
- **The right type**
- **The right component**
- **At the right time**



It takes a special type *to save a life*



**Thank you for
helping us be
good stewards of
this precious
community
resource.**

It takes a special type *to save a life*

**South Texas
Blood & Tissue Center**

**Make an appointment at
210-731-5590**

www.southtexasblood.org